

THE MOST **COST-EFFECTIVE** SORTING SOLUTION



STD



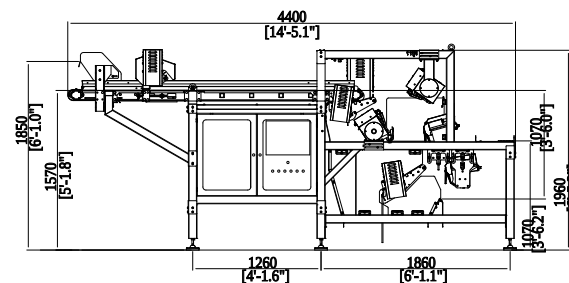
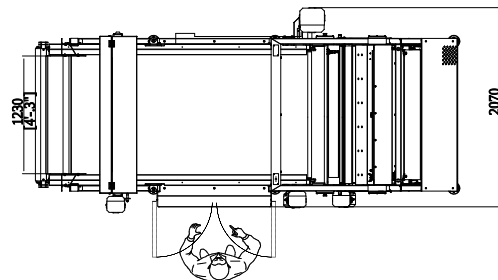
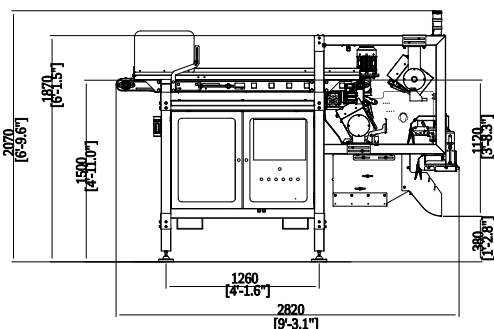
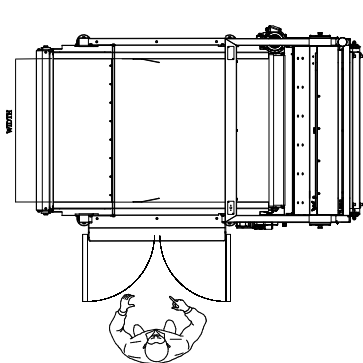
High Speed

RAYNBOW is a high resolution sensor sorter. It is equipped with Visible Color and NIR technology (Near Infra Red). The system can detect the presence of organic or inorganic foreign bodies (including completely black), rotten products and color defects. Ethernet connection for remote access is available.

Product traceability: the installed software allows data collection during process for offline analysis and/or traceability. The software works with four control levels which can be independently parameterized and it has a simple interface.

Minimal re-calibrations of the machine are required, typically only twice per year.





TECHNICAL FEATURES					
	R-230	R-240	R-250	R-250 HS	R-270
Sorting channels	30	40	50	50	70
Vision area width	750 mm	1000 mm	1250 mm	1250 mm	1750 mm
Pixel dimension	4x4 mm				
User interface	15" LCD touch-screen monitor				
Rejection channel width	25 mm				
Rejection type	Mechanical fingers (Mod. M) / Air jets (Mod. J)				
Remote connection	Ethernet and/or modem				
Vision glass cleaning device	Integrated and pneumatically controlled				
Conveyor speed	50 ÷ 72 m/min				
Power Supply and consumption					
Power supply	3-Ph + G				
Voltage	400/480 V				
Frequency	50/60 Hz				
Installed power	1.3/1.5 kW				
Applied air treatment (pneumatic circuit)	Dehumidification - Filtration - Lubrification				
Lubricating system (pneumatic circuit)	Food grade and pharmaceutical compatible				
Working pressure (pneumatic circuit)	5÷ 8 bar				
Typical consumption (pneumatic circuit)	150 NL/min (Mod. M) - 1200 NL/min (Mod. J)				
Max. air flow rate (pneumatic circuit)	1000 NL/min (Mod. M) - 3600 NL/min (Mod. J)				
Water treatment (water circuit)	Filtration				
Working pressure (water circuit)	1÷ 4 bar				
Water consumption (water circuit)	Lower than 0.1 m3/h				